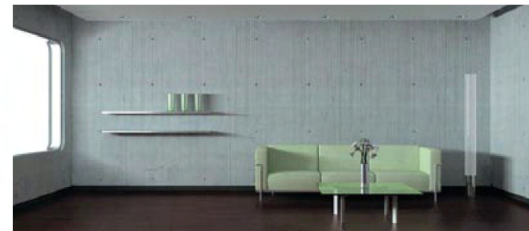


**FORMCRAFT**  
A SUPERIOR WAY TO BUILD

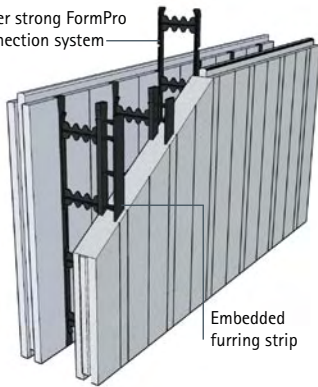


insulated concrete formwork



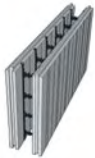
[formcraft.com.au](http://formcraft.com.au)

Super strong FormPro connection system



Embedded furring strip

Insulated concrete forms (ICF) are being rapidly adopted around the world as an energy efficient, fast track and a cost effective wall system. This building method has been used in Europe and North America for many years for structures ranging from retaining walls and residential construction to commercial and high rise buildings. The Formcraft wall system uses high density expanded polystyrene (EPS) panels to form steel reinforced concrete walls. Once the concrete hardens, you have a wall system that outperforms traditional construction methods.



FULL BLOCK	LENGTH	HEIGHT	WALL THICKNESS	CONCRETE THICKNESS	CONCRETE USAGE	SURFACE AREA
220 model	1200	600	220	100	0.072m <sup>3</sup>	0.72m <sup>2</sup>
270 model	1200	600	270	150	0.108m <sup>3</sup>	0.72m <sup>2</sup>
320 model	1200	600	320	200	0.144m <sup>3</sup>	0.72m <sup>2</sup>



HALF BLOCK	LENGTH	HEIGHT	WALL THICKNESS	CONCRETE THICKNESS	CONCRETE USAGE	SURFACE AREA
220 model	1200	300	220	100	0.036m <sup>3</sup>	0.36m <sup>2</sup>
270 model	1200	300	270	150	0.054m <sup>3</sup>	0.36m <sup>2</sup>
320 model	1200	300	320	200	0.072m <sup>3</sup>	0.36m <sup>2</sup>



CORNER BLOCK	LENGTH	HEIGHT	WALL THICKNESS	CONCRETE THICKNESS	CONCRETE USAGE	SURFACE AREA
220 model	1000/400	600	220	100	0.0708m <sup>3</sup>	0.84m <sup>2</sup>
270 model	1000/400	600	270	150	0.1017m <sup>3</sup>	0.84m <sup>2</sup>
320 model	1000/400	600	320	200	0.1296m <sup>3</sup>	0.84m <sup>2</sup>



**ACCESSORIES**  
Subframe 220 5.8m length  
Subframe 270 5.8m length  
  
Material - Aluminium



**ACCESSORIES**  
Corner alignment rod 28 x 28mm  
3m length  
  
Material - PP




**ACCESSORIES**  
C Channel 60 x 20mm  
3m length  
  
Material - 0.55 BMT



**ACCESSORIES**  
Brace 3m high  
Corner brace 3m high  
  
Material - 3mm Steel







## high performance walls



### FAST & COST EFFECTIVE

Formcraft's advanced concrete forming technology delivers proven savings in labour, design and transport costs.

The simplicity of this construction method means that it is ideal for owner builders

The lightweight and flat packed design enables convenient on-site assembly and the panels are less expensive to transport.



### ENERGY EFFICIENCY

The EPS insulation in Formcraft walls provides a thermal resistance rating of R-3.5. This exceptionally high R value, along with high thermal mass and reduced air infiltration, translates into significant energy savings and reduced operating expenses for the building owners and operators. The result is a superior internal environment that is comfortable, quiet and energy efficient.



### STRENGTH

Formcraft walls deliver all the strength and design performance you would expect from a steel reinforced concrete wall. Compared to brick or steel framed walls, Formcraft walls are much better able to withstand severe and cyclonic weather conditions. The Formcraft ICF wall system results in a solid, stable and durable structure.



### FINISHING SYSTEMS


Formcraft walls accept any finish material with ease. Reinforced acrylic render systems are often used to create durable and stylish exterior render finishes.

The embedded furring strips moulded into the Formcraft panels will accept almost any screw fixed cladding system. Colorbond, Mini Orb or Fibre Cement sheeting are all cladding systems that are easily incorporated.



### ENVIRONMENTALLY FRIENDLY

Buildings designed with Formcraft are designed to last for centuries, not decades. Formcraft maximises the amount of recycled material used in all its products. These products are inert, hypoallergenic and no CFC's are used in the production process. Formcraft promotes sustainable, green building practices, and contributes significantly to achieving 7 star energy ratings.



## simple building

### STACK

The blocks are easily assembled using the Formcraft connection system. It is then simply a matter of stacking the blocks on a pre poured slab to form the walls. The corner and half blocks bring added convenience to the modular building system. Formcraft utilises its proprietary frame system for door and window openings.

### BRACE

A lightweight bracing and scaffold system is used to prop the walls and to provide a platform for pouring the concrete. Reinforcement bars are easily inserted prior to the pouring of the concrete to further increase the strength of the walls.

### POUR

Concrete is pumped in the cavity between the formwork panels with a concrete pump. The panels stay in place to become the insulating element of the walls.

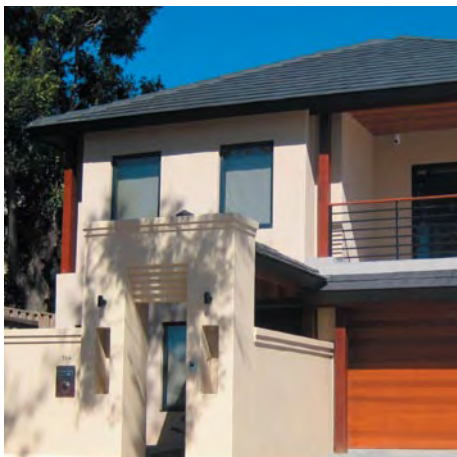


## installation, training & technical support



Formcraft offers a complete installation service from its experience construction teams and also provides training, certification and unrivalled engineering and technical support for builders and contractors.

Formcraft offers an integrated range of energy efficient, fast track and cost effective building systems and a range of external finishing systems.



FormSpan  
insulated roofing

Hardi-board/  
Weather board  
cladding

Custom orb/  
Mini orb cladding

Exterior insulation  
finishing system  
applied to exterior face

Stone cladding

Adhesive waterproof  
membrane

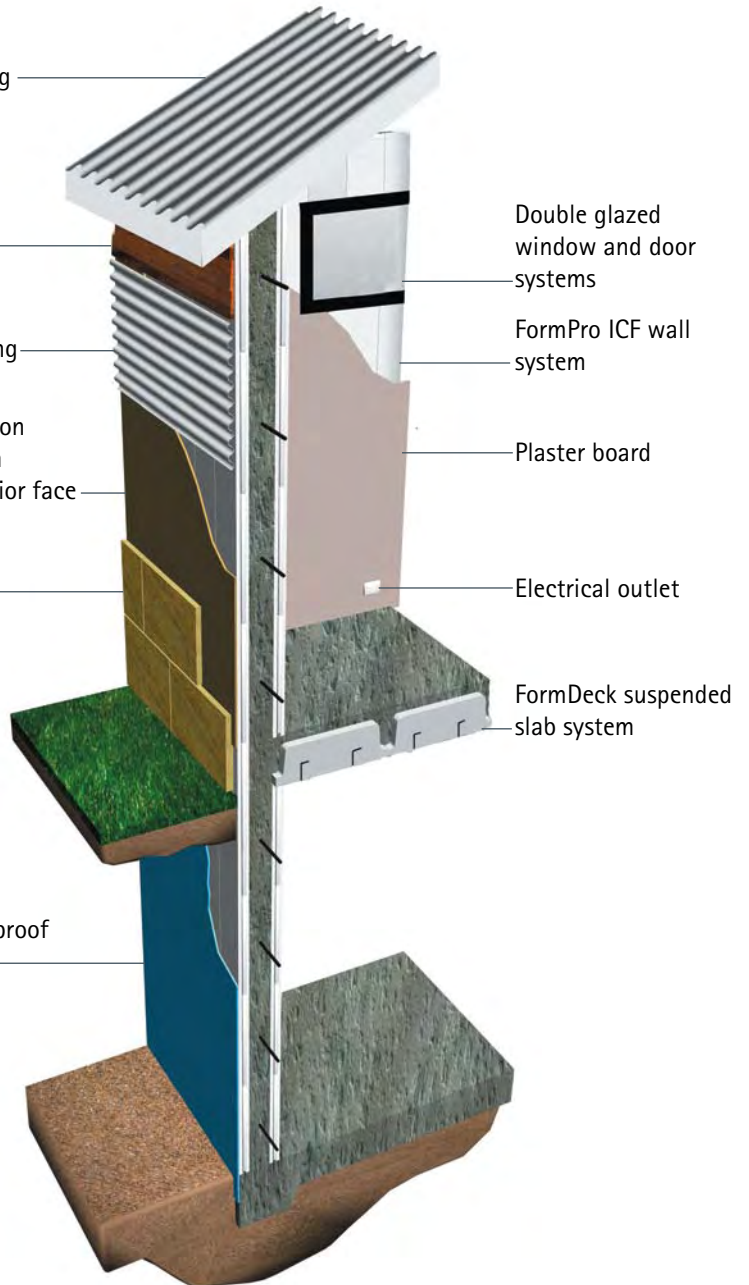
Double glazed  
window and door  
systems

FormPro ICF wall  
system

Plaster board

Electrical outlet

FormDeck suspended  
slab system



**HIA members**  
the best in the business



#### AUSTRALIA WIDE AVAILABILITY

Through its network of regional wholesalers and distributors Formcraft can supply its products to anywhere in Australia.



634 Casella Place  
Kewdale Western Australia 6105  
T +618 9353 4161  
F +618 9353 4162  
E [info@formcraft.com.au](mailto:info@formcraft.com.au)

DISTRIBUTOR